



Charter Point Notes



August 2010

The first day of school after summer vacation is a form of holiday for mothers. It would have been called Independence Day, but that name was already taken. ~ Erma Bombeck, American humorist

Attention: New Charter Point Residents!



Welcome to Charter Point! The Charter Point Community Association has a packet of information and a hospitality gift for you. If you recently moved into the neighborhood and would like a welcome visit, contact Nancy Barnes, Hospitality Chair, at 744-9055 or nancyfsu76@aol.com.

Covenants Corner

Together, we can keep Charter Point the jewel of Arlington.



Once again, the Charter Point Community Association Board and Covenants Revision Committee thank the many enthusiastic supporters of our new covenants. Consents were received from 183 homes, representing more than the minimum 75% necessary to adopt the new document.

Back to School Supplies



The nearby Watson Realty office at 5610 Ft. Caroline Road is collecting school supplies for Ft. Caroline Elementary and hopes to have a good stockpile collected by August 15. Call the Watson office at 744-8710 for a list of needed supplies.



A major concern expressed by supporters was the upkeep of the neighborhood's lawns/lots. As stated in the May 2010 edition of the *Charter Point Notes* newsletter, corrective measures for improved lawn upkeep and maintenance had been enacted and was in process of being enforced.

The Board is continuing to enforce the provisions of these standards vigorously as mandated by the overwhelming resident concern for this issue. A copy of the "minimum standards" of lawn/lot care is published in this issue for your reference.

Catherine Workman, 2nd from right.



Catherine Workman Places in Pageant's Top Tier

Kudos to Catherine Workman, 5447 Oak Bay Drive, for taking 2nd runner up honors in the 2010/2011 Ms. Senior Jacksonville Pageant! According to a Florida Times Union report, the diverse contestant group represented a wide variety of backgrounds, including Brazil and the Caribbean, and performed everything from comedy and poetry to singing and jazz dancing. The pageant also featured a "fan favorite" contest. Catherine's profile demonstrates her outstanding community spirit by volunteering at church, the Trinity Rescue Mission, and devoting time to other worthy causes. She thanks all Charter Point neighbors for your "fan favorite" votes.



If you have not yet signed a consent form, it is not too late to do so. Adding your signed consent to the others will signify that you stand with your neighbors in solidified commitment to the standards and enforcement steps necessary to maintaining the property values deserving of an upscale neighborhood.

Volunteer Ombudsmen Needed!

The position of Ombudsman was created in the new covenants to provide homeowners with an unofficial audience for hearing concerns about compliance issues without the formality that has created tensions in the past. The position is designed to enhance the "neighborly" treatment of all owners while providing an inducement to comply with the covenants without confrontation. Ombudsmen will be thoroughly knowledgeable of the covenants and will liaison between a homeowner and the CPCA board if a dispute arises. An ombudsman will not be a member of the Board.

Several homeowners have volunteered to serve as Ombudsmen, but a few more are needed. All positions must be filled soon. If you are interested in being part of a C&R resolution team to help amicably resolve issues when a need arises, please contact Ernie Waller, C&R Revision Committee Chair, as soon as possible at 743-3395 or ernest.waller@comcast.net for more information.

Welcome to Our Newest Neighbors!



Steven and Virginia Richey returned to their home at 4358 Charter Point Blvd (lot 141), after retiring from the military. Please note a (*) by their listing in the Charter Point Directory to indicate CPCA membership.

Ed & Marcia Brunson recently moved into their new home at 4471 River Trail Road (lot 183). Welcome!

Save the Date! Saturday, September 18, 2010

Charter Point Community Association Members' Meeting
University Park Library, 10:30 AM to 12:00 PM

Open to members in good standing and new residents.



Lawn & Landscape Maintenance

The new revised Covenants empower the Association to take action when lawns are neglected. Properties must meet the exterior standards established by these Covenants, with lawns regularly maintained in a neat fashion. The following guidelines represent the expressed concerns submitted by Charter Point residents, approved by the CPCA Board.

GUIDELINES for MINIMUM lawn maintenance: "Minimum" assumes that a lawn is already in reasonable condition. Obviously if a lawn is in poor shape, it will need more work to restore it.

- The front, side and rear yards must be sodded with sufficient grass or appropriate ground cover (e.g., ivy, Mondo grass, shrubbery, flower beds, Xeriscaping and the like) with the exception of paved areas, patios, swimming pools, etc. Landscape design is up to the discretion of the individual property owner in keeping with CPCA covenants. Shade tolerant sod or appropriate ground cover is suggested for heavily shaded lawns that cannot grow grass.
- Shrub and Ground Cover Beds: planting areas consisting of groundcover and shrubs should be regularly maintained to prevent an unkept appearance created by overgrown or "leggy" plant growth or invasive weeds. Weeds should be routinely removed or chemically or organically controlled. General trimming of shrubs to maintain a natural shape which is characteristic of the plant is encouraged. Mulching of shrub and groundcover areas is also encouraged. The edges where beds meet turf or structures should be maintained with a clean, trimmed edge.
- All lawn and garden areas must be kept free of weeds and maintained in a neat fashion. Weeds must be removed regularly.
- Lawns must be cut weekly during the growing season; during the hot, drier summer months, cut once every 10 days. Grass must not exceed 6 inches in height. To prevent stressing the grass, leading to disease or death, care should be taken to avoid mowing too close to the root: Suggested mower blade height from the grass roots (St. Augustine variety): 3.0" – 4.0". *Source: Florida Cooperative Extension Service, Publication SS-ENH-09*
- Mower Clippings: grass clippings should not be permitted to remain on any street, driveway or sidewalk after mowing is completed. All clippings must be raked, swept, or blown off these surfaces. Clippings should not be swept or blown into storm sewer inlets or neighboring yards.
- Lawns must be edged at least periodically (e.g., monthly in March, May, July, September, November, at minimum). All areas that touch concrete (curbs, sidewalks, etc.) must be edged.
- Dead trees must be cut down and stumps removed to ground level and removed from the property promptly to prevent loss of living trees via pests and/or disease. No CPCA approval to remove dead trees is required. Consulting an arborist before removing a possibly diseased tree is recommended. Do not rely on the advice of a lawn service or tree trimmer.
- Pruning: trees should be pruned to remove dead limbs and suckers, and in such a manner to maintain the general natural shape characteristic of the species. Limbs which endanger physical property (fences, houses, etc.) on an adjacent property should be removed. Tree branches over the sidewalk should be trimmed to at least ten (10) feet in height over the sidewalk area.
- Vines: non-ornamental vines (e.g., Kudzu, creeper vines, etc.) must be kept from proliferating on fences and home exteriors. Honeysuckle and jasmine are acceptable vines provided they are not so invasive that their growth is engulfing a neighboring tree or shrubbery, or so heavy along a fence that the fence is at risk of deterioration or being pulled down by the weight of the vine.

In the event that a yard is neglected by an absentee owner, the Association may, after following prescribed steps, take action to provide remedial action and charge the owner. If a yard is neglected by an owner in residence, the Board may enforce its reasonable requirements for maintaining the property and has tools for enforcement, along with procedures for communication to avert unnecessary confrontation.

Charter Point is an upscale neighborhood, even more attractive in years past. If we all do our part in keeping up our lawns, we will reap aesthetic and financial rewards. Lawn standards and enforcement procedures were not created to effect a "Stepford - like" neighborhood, where each lot looks exactly the same. However, our little oasis in Arlington has experienced a downturn in appearance in recent years, as evidenced by the continued gross neglect of several properties. Such deplorable conditions are totally unacceptable. Additionally, several sub-standard, but less glaring properties need attention, too. We can all at least regularly mow and edge our lawns, and sustain a good portion of grass or attractive groundcover. If you are struggling to maintain your lawn, please contact a service provider for assistance or ask neighbors who use a lawn service for recommendations. Neighborhood teens looking to earn extra money may also be available to tend to basic lawn care needs for a nominal charge. Outsourced or self-attended, lawn care is a good investment in your property.



Charter Point Breaking News

Don't miss important news, such as security alerts, bulletins from City officials and other news that can't wait for the next newsletter! To join, simply email cpcanews@aol.com. All e-bulletins are sent bcc: to preserve email address privacy. Breaking e-News currently reaches over 175 Charter Point households!

Charter Point Community Association Board

President:

Walt Holton
4304 Fern Creek Drive
762-1502 or wholton@bellsouth.net

Vice-President:

Ernie Waller
4545 Oak Bay Drive, W.
743-3395 or earnest.waller@comcast.net

Secretary:

Linda Hemphill
5487 River Trail Road, N.
745-1833 or cpcanews@aol.com

Treasurer:

Bobby Huey
4499 Charter Point Blvd.
743-9837 or yeuh@aol.com

Committee Chairs

Community Improvements:

Ben Allen
4534 Oak Bay Drive, W.
745-3164 or benallendeere@yahoo.com

Covenants & Restrictions:

Craig Hemphill
5487 River Trail Road, N.
745-1833 or rcraigh@aol.com

Hospitality:

Nancy Barnes
5478 River Trail Rd N.
744-9055 or nancyfsu76@aol.com

Membership:

Bob Barletta
4432 Fern Creek Drive
743-4996 or bob.b1@comcast.net

Security:

Nathan Jackson
4440 Oak Bay Drive, W
762-1983 or nej904@aol.com

Social:

Carol Allen
4534 Oak Bay Drive, W.
745-3164 or yougocarol@yahoo.com

Newsletter Editor/Breaking e-News

Linda Hemphill

Web Site Rene Sapia

webmaster@rjswbdesigns.com

IT Professionals of Jacksonville

www.itprojax.com

William J. Cuartero

President

5354 Oak Bay Drive, E. Jacksonville, FL 32277

Tel: 904.743.0084

Fax: 904.212.0406

Email: bill@itprojax.com

A Dell Solutions Provider: Network Administration; Network Security; Firewalls; Email Set-up; Wireless Networks; Dell Equipment Sales. 29 years of Information Technology experience.

August - Yard of the Month

Jeff & Sandy Pond
5451 Woodwind Terrace
Lot 190



Condolences to Doug & Jean Tibbetts, 4410 Fern Creek Drive, for the recent passing of Doug's mother, Phyllis Tibbetts, 90, of Penney Farms.

www.charterpoint.org!

Check out the Website for copies of governing documents, architectural approval forms, activities calendar, newsletters, important phone numbers for City services, and much more, 24/7!



Friendly Reminder: Before commencing any painting, roofing, or other substantial remodeling to your home's exterior, an Architectural Review application must be provided and consent received prior to commencing an exterior improvement project. **Charter Point governing documents** (C&R, CPCA bylaws, and an Architectural Review application) are available on the website, www.charterpoint.org. Contact Walt Holton, CPCA president or Craig Hemphill, C&R Committee chair, with questions.

Attention Charter Point Business Owners!

Advertise your business in this newsletter. Residents: Spread the word about a great service provider by publishing a shout out as a satisfied customer. Send ad copy and recommendations to cpcanews@aol.com.



CERTIFIED
AUTO
REPAIR

& AUTO SALES

SINCE 1977

904-744-7877

2104 UNIVERSITY BLVD. N. • JACKSONVILLE, FL 32211

Complete Import & Domestic Service

www.certifiedautorepair.com

WADE ANDERSON
OWNER

BILL BIRCH
SHOP MANAGER





Dear Friends:

This week, NFL Commissioner Roger Goodell visited Jacksonville to address a group of community and business leaders and show his support for this community's efforts to revive the pride in our home team. Commissioner Goodell made it clear that he wants the Jaguars to succeed in Jacksonville. And with a sufficient buy-in from fans like you, the team can and will remain a viable part of this community for the long term.

Let's not forget that last season all but one of our home games was blacked out locally. Media outlets throughout the country published stories about Jacksonville and what was perceived to be a lack of support for our NFL franchise. These same stories speculated that the future of this team in Jacksonville was questionable.

I knew something had to be done and I called together business and community leaders to make it happen. The group responded and Touchdown Jacksonville – Revive the Pride was launched. The goals of the group were simple: sell tickets and eliminate blackouts in Jacksonville.

Since that time, the response from this community has been unparalleled. More than 13,500 season tickets have been sold and community pride in the Jaguars is soaring. The momentum we've created in this offseason has brought us within striking distance of our goal. As of today, only about 4,300 season tickets stand between us and a blackout-free season. So while we've accomplished a great deal, our work is not yet finished. Sincerely, John Peyton, Mayor
(received 8/6/10 via email to cpcanews@aol.com from mayorsupdate@list.coj.net)

Considering a garden or landscaping update? Why drive to Lowe's or Home Depot when there is a terrific nursery nearby? Check out Bel Meridian Nursery's (formerly Beautiful Blooms) large, healthy selection of

J. Judson Miller



5611 Ft Caroline Road
Jacksonville, FL 32277
judson@belmeridiannursery.com

p.904.744.3740
c.904.422.4330
f.904.744-3741

flowering plants, trees, palms, shrubs, grasses, annuals, and perennials, etc. Be sure to stop by soon to take advantage of some great summer clearance prices.



Ice Cream Social Beats the Summer Heat!

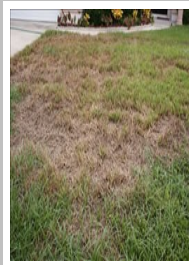
Neighbors and guests mixed, mingled and chilled out at a scrumptious ice cream and dessert buffet last month.

L-R: Pat Cloud, Craig Hemphill, Greg Cloud, Bobby Huey and guest, Peggy Huey. Seated, Marge Roddy.

Thanks to all who brought a tasty treat to share.



Wade & Nancy Barnes



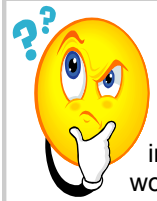
Chinch Bugs

According to Turf Masters, lawn techs have noticed a large increase in the population levels of chinch bugs this year. Chinch bugs feed by sucking juices from the leaves and stems of grass and inject the grass with a toxin that blocks food and water conducting vessels.

To easily detect chinch bugs in a distressed patch of lawn, locate the edge of a section of distressed turf and look closely at the thatch area. Be quick because the bugs are small and hide rapidly. If you do not see any bugs but want to confirm infestation one way or the other, using a small can with both ends cut out, push the can into the ground, and fill with soapy water. The chinch bugs will float to the top. ~ Information provided by Turf Masters, (904) 724-9114. Contact Turf Masters for more information.



Thinking of Quitting Your Job?



Many people have had the impulse to quit their jobs out of anger, but if the urge ever strikes you in the heat of the moment, cool down by considering: 1) You're angry now, but will you be able to work with the people around you going forward? 2)

Can your employee assistance program help you examine issues you are facing that are prompting a desire to quit? 3) What are the chances that things will change or can be changed for the better soon? (i.e. the environment, coworkers, ability to handle the event that you are facing at this moment, etc.) 4) Is this the job that can take you forward toward your goals? 5) What immediate needs does your job fill? Suddenly quitting a job is not like in a TV show. Almost always, the stakes are high if you quit and enter a pool of other job seekers while losing the potential of a positive reference. Consider your options. Avoid the emotional anguish, stress at home, and the financial impact of suddenly leaving your employer, especially if you do not have another job lined up (*Frontline Employee E-Newsletter*, August 2010, www.corporatecareworks.com).